



Girasol

Self Tracking and Self Power Generating, Solar Control System



“This system requires no electricity or electronic controls to operate”

INTRODUCTION

The Colt Girasol is a self sun-tracking device especially designed to work in conjunction with all external controllable solar shading systems.

The unique feature of the Colt Girasol control system is that it operates solar shading fins/louvres without the use of electrical power or a sophisticated electronic control system.

The Girasol is manufactured from high quality components including; surface-treated aluminium, stainless steel and UV-stabilised plastics to ensure the highest standard of performance and operation.

OPERATION

Two “collector” evaporator tubes, approximately 3m long, are fixed to the top and bottom of a louvre blade and are filled with a special CFC-Free thermo hydraulic fluid.

As the Sun moves across the building, one tube will heat up whilst the other will cool down, thus expanding or contracting the fluid in each tube to rotate the louvres.

Both tubes are linked to an actuator which will operate the louvres depending on the optimum shading position.

FEATURES & BENEFITS

Noiseless

Solar powered - requires no additional electrical energy source

No electronic control system required

Easy to install, no interface required for wiring

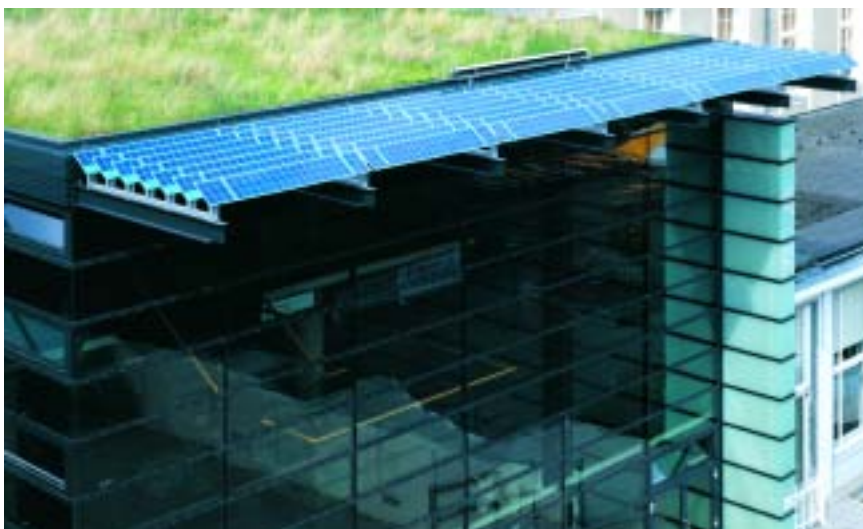
No human intervention required

Single drive can control up to 50m² of solar shading louvre

Environmentally friendly

Low maintenance

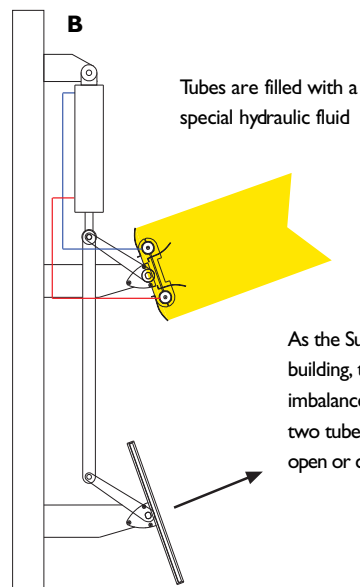
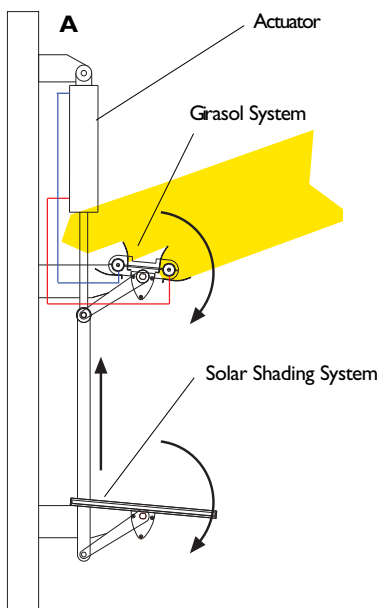
A single Girasol system, 3m in length, controls a complete South facing façade installed on the Hanover Congress Centre in Germany





“Girasol” is Italian for Sunflower, a plant that always faces the sun

“The Colt Girasol is completely self generating”



A - UNBALANCED

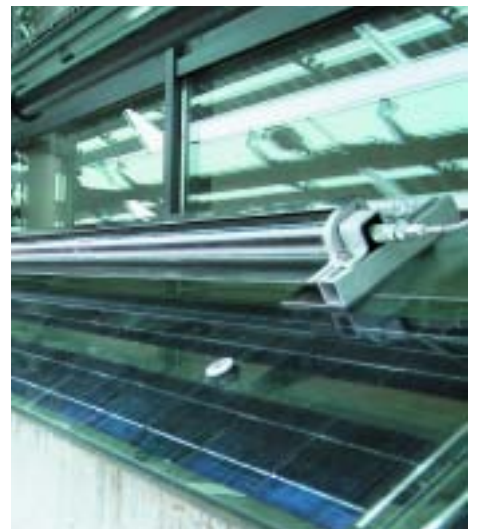
B - BALANCED

As the Sun moves over the building, there will be an imbalance of heat between the two tubes and the louvres will open or close as appropriate

Feat Apartments, Lugano, Switzerland



Schwerin Water Works, Germany



SBL Offices in Linz, Austria,
utilising the Colt Girasol to
control a Colt Shadovoltaic
System (louvres with
integrated photovoltaic cells).



INSTALLATION

The Colt Girasol system can be installed in two configurations:

Option1 - Tubes installed top and bottom of the actual louvre blade.

Option 2 - Tubes installed elsewhere on the building as a separate item.

MAINTENANCE

The Colt Girasol system requires little maintenance - periodic cleaning and a simple annual service are recommended.

COLT SERVICE

Part of the Colt Group of companies, Colt Service offers a comprehensive range of maintenance packages incorporating the maintenance and repair of all building services equipment including non Colt products.

Colt Service provide a 24 hour, 365 day emergency cover as standard.



Architectural Solutions

Climate Control

Smoke Control

Service and Maintenance

Colt International Limited

New Lane Havant

Hampshire PO9 2LY

Tel +44(0)23 9245 1111

Fax +44(0)23 9245 4220

info@coltgroup.com

www.coltgroup.com